

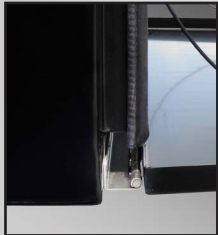


Steel Toolbox with Stainless Steel Door

Phoenix™ USA

Available sizes:

- STSD24**
24" toolbox
- STSD30**
30" toolbox
- STSD36**
36" toolbox
- STSD48**
48" toolbox
- STSD60**
60" toolbox



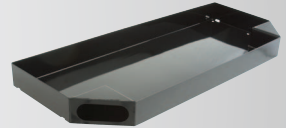
New Innovative Hinge

New innovative hinge design allows for mounting on top or underneath without hindering the hinge or door.

Mirror Polished Stainless Steel Door

Using the highest quality materials and technique to create a smooth mirror-like finish on durable 13 gauge stainless steel doors with no unsightly cross-breaks.

Don't forget your Top Mount Storage Tray, which will fit all larger tool boxes. Please Note: there is a 2" overhang on the back of all 18" boxes.



Phoenix USA's patented rolled door increased structural integrity without using unsightly cross breaks.

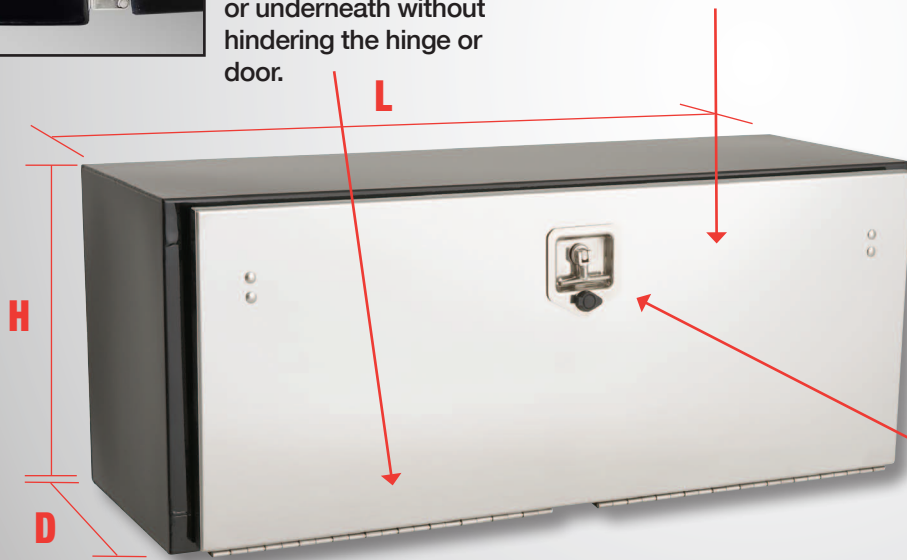


STSD

- All 13 gauge steel construction.
- High-gloss automotive powdercoat finish.
- All stainless steel hardware.
- Automotive bulb seal

T-Handle Latch

All stainless steel construction latch with lock cover.



Part Number	Description	Outside Dimensions	Door Opening	Weight
STSD24	24" Black powder coated steel toolbox with a polished stainless steel door	24L X 18D X 18H	19L X 14H	66 lbs.
STSD30	30" Black powder coated steel toolbox with a polished stainless steel door	30L X 18D X 18H	25L X 14H	77 lbs.
STSD36	36" Black powder coated steel toolbox with a polished stainless steel door	36L X 18D X 18H	31L X 14H	88 lbs.
STSD48	48" Black powder coated steel toolbox with a polished stainless steel door	48L X 18D X 18H	43L X 14H	111 lbs.
STSD60	60" Black powder coated steel toolbox with a polished stainless steel door	60L X 18D X 18H	55L X 14H	136 lbs.

Available Accessories

- top mount storage tray
- mounting clips
- adjustable tool shelf
- mounting brackets
- LED lighting
- LED light mount accessories
- customized wiring harness